

NOVATEM G2 MT-Plus

Very high resolution

Electromagnetic, Magnetic, Spectrometric and LIDAR surveys

- *Very weakly magnetic due to its construction in composite materials and aluminum*
- *Very low height surveys along a very regular draped surface*
- *Very stable in the wind : no noise due to the movement of the sensor*
- *Flight time of more than 4 hours in survey mode (instead of 2.5 hours for a traditional helicopter)*
- *Fuel consumption 4 times lower than an Astar helicopter. The carbon footprint is thus considerably reduced*
- *Very quiet : the sound value according to ICAO standards is 75.7 dB, which classifies it as one of the most quiet helicopter ever produced*



ELECTROMAGNETIC MAGNETIC AND SPECTROMETRIC



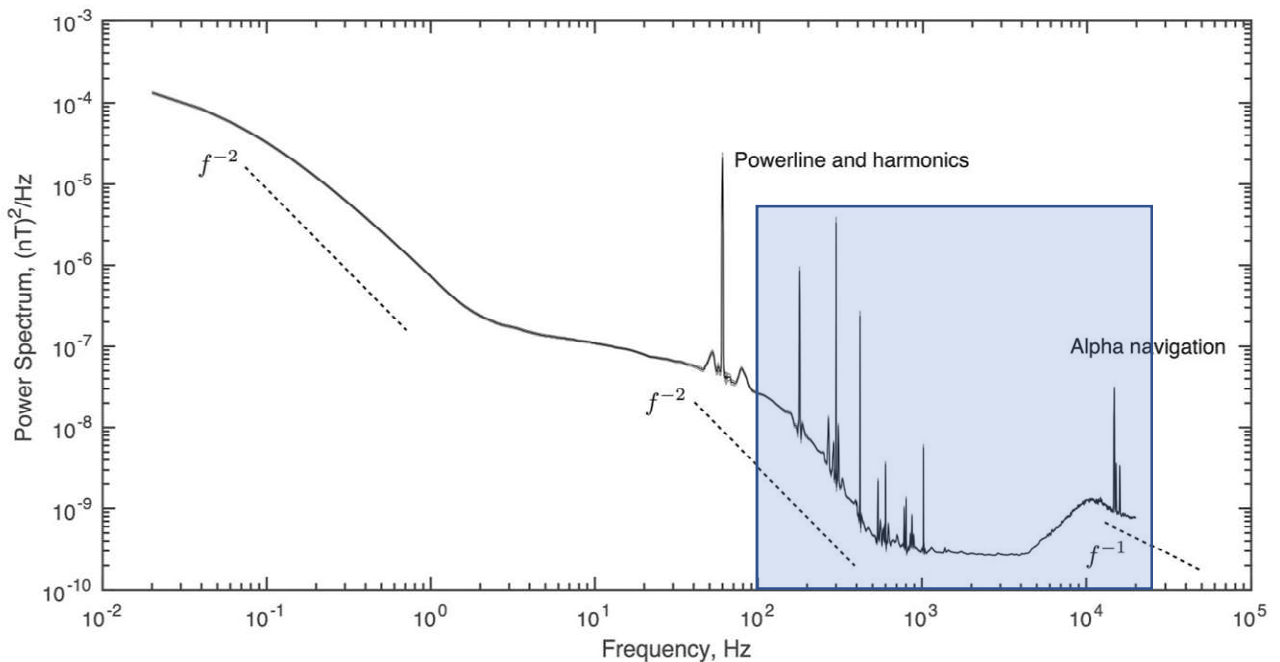
LIDAR

NOVATEM G2 MT-Plus **Very high resolution** **Electromagnetic and Magnetic surveys**

Novatem MT Plus system samples the natural electromagnetic field in the frequency range between 100 Hz and 24 000 Hz.

Novatem MT Plus system therefore uses as source the broad peaks of the natural fields due to global lightning return strokes; Plus the EM-VLF field, usually in Canada at the 24 kHz frequency. Measurements are made on 3 orthogonal inductive coils located at the front of the helicopter.

The band measured by the Novatem MT Plus system is shown in blue on the following figure of the magnetic spectrum sampled at the Clark Dry lake observatory (California).



NOVATEM G2 MT-Plus